

EDITORIAL NOTES

Editor: E. G. EBERLE, 10 West Chase St., Baltimore, Md.

Members of the Council, A. PH. A.: S. L. HILTON, *Chairman*; CHARLES H. LAWALL, *Vice-Chairman*; E. F. KELLY, *Secretary*; H. V. ARNY, A. G. DUMEZ, GEO. M. BERINGER, H. C. CHRISTENSEN, J. A. KOCH, J. H. BEAL, W. B. DAY, T. J. BRADLEY. *Ex-Officio Members*: C. W. JOHNSON, *President*; AMBROSE HUNSBERGER, JOSEPH JACOBS, *Vice-Presidents*; C. W. HOLTON, *Treasurer*; E. G. EBERLE, *Editor of the Journal*; A. G. DUMEZ, *Editor of the Year Book*; LEONARD SELTZER, *Chairman of the House of Delegates*.

Collaborators: The Members of the Council; E. FULLERTON COOK, *Chairman*, U. S. P. Revision Committee; W. L. SCOVILLE, *Chairman*, N. F. Revision Committee; the Chairmen of the Sections, A. PH. A.; L. W. ROWE, M. N. FORD, ADLEY B. NICHOLS, C. LEONARD O'CONNELL, W. P. PORTERFIELD; EDWARD SPEASE, *President*, A. A. C. P.; CHARLES B. JORDAN, *Chairman*, Executive Committee, A. A. C. P.; A. C. TAYLOR, *President*, N. A. B. P.; HENRY C. CHRISTENSEN, *Secretary*, N. A. B. P.

NEW AND NONOFFICIAL REMEDIES.

The following additional articles have been accepted as conforming to the rules of the Council on Pharmacy and Chemistry of the American Medical Association for admission to New and Nonofficial Remedies. A copy of the rules on which the Council bases its action will be sent on application.

W. A. PUCKNER, *Secretary*.

DEXTROSE (See New and Nonofficial Remedies, 1927, p. 220).

The following dosage form has been accepted:

Sterile Solution of Dextrose (d-Glucose) 50 cc. Double End Vial: Each vial contains Dextrose, U. S. P., 25 Gm.; cresol, 0.1 per cent; distilled water, to make 50 cc.; buffered with diabasic sodium phosphate anhydrous, 0.44 per cent and potassium biphosphate anhydrous, 0.072 per cent.

Prepared by H. K. Mulford Company, Philadelphia.

CAPROKOL (Hexylresorinol-S. & D.) (See New and Nonofficial Remedies, 1927, p. 320).

The following dosage form has been accepted:

Hexylresorcinol Solution S. T. 37: A solution of hexylresorcinol-S. & D., 1 part, in a liquid composed of glycerin 30 per cent and water 70 per cent, 1000 parts.

ILETIN (INSULIN-LILLY) (See New and Nonofficial Remedies, 1927, p. 198).

The following dosage form has been accepted:

Iletin (Insulin-Lilly) U-100, 10 cc.: Each cubic centimeter contains 00 units.

Jour. A. M. A., January 28, 1928.

LIVER EXTRACT NO. 343.—A water-soluble, nitrogenous, nonprotein fraction obtained from fresh mammalian liver. It is supplied in vials containing an amount of powdered extract (3 to 4 Gm.) representing 100 Gm. of fresh liver.

Actions and Uses.—Liver extract No. 343 is used in the treatment of pernicious anemia. Only preliminary observations have been made concerning its value in conditions other than pernicious anemia; apparently it is of value in some other types of anemia, but definitely seems to be of little or no value in many cases of ordinary secondary anemia.

Dosage.—Liver extract No. 343 is administered orally, the contents of one vial being dissolved in about 30 cc. (1 fluidounce) of water, orange juice or other vehicle. Exact knowledge concerning the daily dose is yet to be determined. Many patients have improved promptly while taking daily the contents of three vials of liver extract No. 343, but as a rule not so rapidly as other patients taking double this amount. The optimum daily dosage appears to be the contents of from six to eight vials. Very large amounts have been given for some days without causing untoward consequences, but may possibly stimulate the blood-forming organs to an undesirable degree.

It may be advisable to give daily to very sick patients the contents of eight vials for the first ten days, after which time the amount may be reduced. As an initial daily dose for the average case, the contents of three to six vials is proposed. This amount is to be taken until the number of red blood cells returns to normal. The maintenance dose required has not yet been determined, but it appears that the use of the extract (or of liver) must be continued to prevent relapse. For the present it is advised that the contents of two or three vials be taken daily and that the patient and his blood be examined at intervals of a month so that the maintenance dose required by the patient may be determined.

Manufactured by Eli Lilly & Company, Indianapolis, under direction of the Committee on Pernicious Anemia of the Harvard Medical School. No U. S. patent or trademark.

To prepare liver extract No. 343, livers from edible animals are ground directly into water, and the mixture adjusted to the isoelectric point (approximately pH 5 to pH 6). The mixture is then heated to coagulate protein (approximately 80 C.); stirred for thirty minutes, and filtered. The filtrate is reduced in vacuum to a small volume and enough 95 per cent alcohol added to produce a concentration of 70 per cent. The precipitate which is formed is discarded and the filtrate reduced to a small volume; added to absolute alcohol and the precipitate separated, dried in vacuum and powdered.

Liver extract No. 343 is a yellow powder having a not unpleasant taste, almost entirely soluble in water. It is precipitated from the aqueous solution by alcohol and acetone. It is insoluble in ether.

From *Jour. A. M. A.*, Feb. 4, 1928.

CALCREOSE (See New and Nonofficial Remedies, 1927, p. 123).

The following dosage form has been accepted:

Compound Syrup of Calcreose.—A syrup containing in 100 cc. calcreose solution, 33.3 cc.; alcohol, 5 cc.; extractives from wild cherry, 4 Gm. (20 grains per fluidounce); chloroform, 0.6 cc. (3 minims per fluidounce); peppermint and other aromatic drugs.

Dosage.—Four to 8 cc. (1 to 2 fluidrachms).

ANTERIOR PITUITARY DESICCATED-LEDERLE.—The anterior lobe of the pituitary gland of cattle, dried and powdered, without the addition of preservative or diluent.

Actions and Uses.—See Pituitary Gland, New and Nonofficial Remedies, 1927, p. 285.

Dosage.—From 0.13 to 0.3 Gm. (2 to 5 grains) three times a day.

Manufactured by the Lederle Antitoxin Laboratories, New York. No U. S. patent or trademark.

Tablets Anterior Pituitary Desiccated-Lederle, 2 grains.

Tablets Anterior Pituitary Desiccated-Lederle, 5 grains.

The fresh glands are freed of extraneous matter, finely ground, spread on glass plates and dried rapidly in a current of warm air. Anterior pituitary desiccated-Lederle is grayish powder with slight characteristic odor. One part represents approximately 5 parts of fresh substance.

From *Jour. A. M. A.*, Feb. 11, 1928.

POSTERIOR PITUITARY DESICCATED-LEDERLE.—The posterior lobe of the pituitary gland of cattle, extracted with acetone, dried and powdered.

Actions and Uses.—See Pituitary Gland, New and Nonofficial Remedies, 1927, p. 285.

Dosage.—From 0.006 to 0.03 Gm. ($1/10$ to $1/2$ grain) daily.

Manufactured by the Lederle Antitoxin Laboratories, New York. No U. S. patent or trademark.

Tablets Posterior Pituitary Desiccated-Lederle, $1/10$ grain.

Posterior pituitary desiccated-Lederle is prepared according to the method given for standard powdered pituitary under Solution of Pituitary, U. S. P. X.

WHOLE PITUITARY DESICCATED-LEDERLE.—The pituitary gland of cattle, including the infundibulum and the anterior

and posterior lobes, dried and powdered, without the addition of preservative or diluent.

Actions and Uses.—See Pituitary Gland, New and Nonofficial Remedies, 1927, p. 285.

Dosage.—From 0.06 to 0.2 Gm. (1 to 3 grains) three times a day.

Manufactured by the Lederle Antitoxin Laboratories, New York. No U. S. patent or trademark.

Tablets Whole Pituitary Desiccated-Lederle, 1 grain.

Tablets Whole Pituitary Desiccated-Lederle, 3 grains.

The fresh glands are freed of extraneous matter, finely ground, spread on glass plates and dried rapidly in a current of warm air. Whole pituitary desiccated-Lederle is a grayish powder with slight characteristic odor. One part represents approximately 5 parts of fresh substance.

From *Jour. A. M. A.*, Feb. 18, 1928.

CALOT'S SOLUTION.

M. R. Guttman ("*Illinois Medical Journal*," August 1927) gives the following formula for Calot's solution as used by him in the treatment of chronic otorrhœa: Guaiacol, 1 Gm.; creosote, 5 Gm.; ether, 30 cc.; iodoform, 10 Gm.; olive oil, 70 cc.

ESTIMATED PRODUCTION OF BUCHU LEAVES IN THE UNION OF SOUTH AFRICA, 1928.

The production of buchu leaves in the Union of South Africa for the season 1928 will probably be somewhat larger than that of 1927. This estimate indicates that the total yield is somewhat less than 200,000 pounds for the 1928 season. The production of buchu could easily be doubled should prices rise sufficiently to defray the cost of gathering leaves in the more remote hillsides.

PERSONAL AND NEWS ITEMS.

John F. O'Brien is a new President of the Rochester Pharmaceutical Association.

E. A. Sayre, a veteran member of the A. P. H. A., was honored by Kings County Pharmaceutical Society and the Brooklyn College of Pharmacy by a delegation of these organizations consisting of Thomas J. France, Henry B. Smith, George R. Christ and Dean William C. Anderson. An embossed set of resolutions was presented to Mr. Sayre, who is now seventy-nine years old and is a charter member of the Society and was one of the organizers of the college and of the ASSOCIATION.

Clyde L. Eddy is a new member of the staff of E. R. Squibb & Sons. His duties will comprise a nation-wide study of conditions applying to both the professional and the commercial aspects of the practice of pharmacy; the iden-

tification of the problems that confront pharmacists and the solution of those problems by the application of practical suggestions, based upon research and long and varied experience.

Last summer Mr. Eddy was at the head of an expedition which successfully negotiated the hazardous 800-mile trip through the Grand Canyon—the only exploring party ever to accomplish this daring feat during the summer time when the Colorado River is in flood. The dangers of this trip and the scenic grandeur of the Canyon's course, viewed from the river level, were photographed in detail and have since been presented to the American public as news-reel features, and in the course of illustrated lectures delivered by Mr. Eddy. A lecture of the course was delivered in Baltimore, March 8th.

More than one million persons visited Field Museum of Natural History during 1927, the largest number in any year of the institution's history. The museum had fourteen expeditions in various parts of the world in 1927.

W. F. Baum, of Danville, a former President of the Illinois Pharmaceutical Association, is spending his usual winter vacation at San Antonio, Texas.

The Membership Committee of the Illinois Pharmaceutical Association is conducting an active membership under the guidance of **Chairman S. L. Antonow**.

P. Henry Utech, of Meadville, **Adolph Schmidt**, of McKeesport and **Jacob Mendelson**, of Pittsburgh, all of Pennsylvania, have recently been sojourning in Florida.

The Pacific Drug Review for March gives quite a complete account of the Oregon Drug Trade Conference and tabulates a survey of nineteen representative Oregon drug stores; also a comparison is made with this survey of operating expenses in retail drug stores in different parts of the country.

Dr. William J. Hale, Director of organic research of the Fow Chemical Company and Past-Chairman of the division of chemistry and chemical technology of the National Research Council, has been appointed Chairman of a committee of the division to foster coöperative researches between industries and academic institutions.

Drs. William J. Mayo and **Alexis Carrel** were guests of honor at a dinner at the Maryland Club, Baltimore, on January 16th, previous to their addressing the Johns Hopkins University School of Medicine on "The Splenomegalias"

and the activities of tissue cells, respectively.

Dr. John Sundwall, professor of hygiene, public health and physical education at the University of Michigan, was elected President of the Michigan Public Health Association at its seventh annual meeting in Lansing on January 13th.

Dr. Sigmund Fraenkel, professor medical chemistry at the University of Vienna, addressed the University of Wisconsin Medical Society on January 12th on "Chemistry of the Vitamins."

The new \$1,000,000 Chandler laboratories of Columbia University were formally opened on February 16th, when members of the society of the Sigma Xi inspected them. The laboratories were built with an anonymous gift of \$1,000,000 made to the University in honor of the late **Prof. Charles F. Chandler**, who was head of the University's department of chemistry. **Dr. Chandler** was for more than 60 years a member of the A. Ph. A.

Dr. William Crocker, director of the Boyce Thompson Institute for Plant Research, on March 15th, addressed the Columbia University chapter of the Society of Sigma XI on "Research on Plants as Exemplified by the Work of the Boyce Thompson Institute."

F. E. Mortenson, former President of the N. A. B. P. is always active in whatever benefits pharmacy. At present he is Chairman of the legislative committee of the California Pharmaceutical Association and is endeavoring to arouse the pharmacists of California to action on the Capper-Kelly Bill.

J. G. McBride, long-time Secretary of the Nebraska Pharmaceutical Association has been unanimously endorsed as a candidate for the Nebraska Legislature.

A. E. Philips has taken up his duties at New Brunswick, N. J., as Director of Merchandising for Johnson & Johnson. For the past ten years **Mr. Philips** has been General Sales Manager of The Welch Grape Juice Company and for several years Vice-President and Director.

The interest of pharmacists in historical records is increasing. In all states efforts are being made to gather historical information relative to the first drug stores and the early pharmacists in the respective states.

The Jacksonville Pharmacy in Oregon was established in 1857 and is said to be the oldest drug store of that State. A description of it is given in the *Pacific Drug Review* for March 1928.

The daily report and inspection in the pharmacy of **John A. Goode** in Asheville, N. C. requires the following information from the Manager of the Department: number of new prescriptions filled, number of old prescriptions filled, errors made, sales lost, repairs to be made, any prescription from day before, preparations manufactured, calls for new preparations, scales cleaned by, invoices checked by, sink and drainboard cleaned by, manufacturing counter cleaned by, typewriter cleaned by, time machine charged and cleaned by, small package goods bottled, etc., special items ordered or to be ordered, floor inspected by, do windows need washing? Number of Rx blanks mailed, any prescriptions signed? Remarks and suggestions.

Petty's Pharmacy, Newark, N. J., celebrated the event of a 2,000,000 mark in the filling of prescriptions which was celebrated with a dinner attended by the officers and employees. This establishment lays claim to being the largest retail pharmacy in the U. S.

OBITUARY.

A. MORRIS EARNSHAW.

The death of Arthur Morris Earnshaw was a distinct shock to the people of East Greenwich, Rhode Island. He was in the prime of life and his illness was sudden and his death unexpected. He was highly regarded in the community and during his funeral all business in East Greenwich was suspended. Flags at Varnum Memorial Armory and elsewhere in the city were at half mast.

Mr. Earnshaw was the son of Arthur A. and Bessie M. (Owen) Earnshaw. He died January 2nd at the Homeopathic Hospital, Providence, following an operation for appendicitis.

The deceased was born November 4, 1901, and educated in East Greenwich and also at the Massachusetts College of Pharmacy. He was associated with his father in the Earnshaw Drug Co.

Besides his parents he is survived by his widow, Mrs. Margaret B. Earnshaw and a brother, Elmer R. Earnshaw.

SOCIETIES AND COLLEGES.

SAN FRANCISCO—THE N. A. R. D. CONVENTION CITY.

Secretary W. Bruce Philip and his efficient coöperators are giving fine publicity to the meeting of the N. A. R. D. to be held in San Francisco during the week of September 10th. Railroad rates are so arranged that after attending the San Francisco Convention the delegates may visit other centers of interest on the Pacific Coast and then return by way of another route.

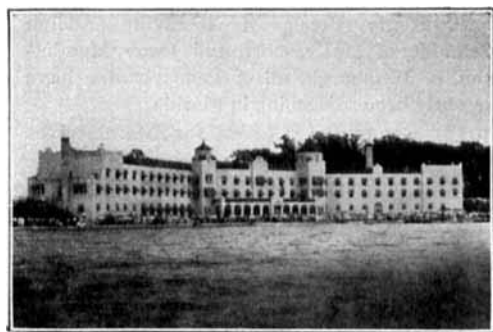
The Committee on Publicity is sending out informative circulars relative to the Pacific Coast Section of the country and is encouraged by many responses from those who contemplate attending the convention in San Francisco.

CENTENARY OF WÖHLER'S DISCOVERY.

Industrial and Engineering Chemistry notes that the year 1928 marks the hundredth anniversary of Wöhler's preparation of urea from ammonium cyanate. That discovery marked the beginning of synthetic chemistry and the beginning of the end of the older vitalistic ideas of organic chemistry. It is planned to celebrate the centenary by a special program at the Boston meeting (Swampscott) of the American Chemical Society in September 1928.

MEETING PLACE OF A. P. M. A.

The American Pharmaceutical Manufacturers' Association will hold its annual meeting at Lake Wawasee, Ind., in June.



MAINE PHARMACEUTICAL ASSOCIATION.

Maine Pharmaceutical Association held its mid-winter meeting February 9th at Augusta. The annual meeting will be held at Poland Spring, June 18th.

MINNESOTA PHARMACEUTICAL ASSOCIATION.

Minnesota Pharmaceutical Association held its annual meeting at the Nicollett Hotel,